



New Products 2020



## SPR SERIES

Optimal protection in fixed installations is guaranteed with the SPR series 19" racks which are compliant to ANSI/EIA RS-310D, DIN41491 and IEC60297 standards and come available in a wide range of heights and depths. They are constructed using a cold rolled steel frame with a thickness of 2 mm and 1,2 mm plates finished in a black (RAL9004) powder coating with fine structure.

They come standard with a reversible tempered glass front and steel rear door, both fitted with easy-swing locks. Other features for this product range are removable sides, in depth adjustable 19" profiles, included leveling feet and wheels.



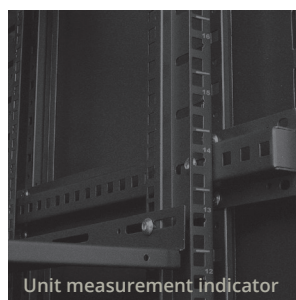
### SPR612

19" rack cabinet  
12 units  
600 mm depth

#### Specifications:

ARTICLE	DIMENSIONS (W x H x D)	USABLE DEPTH	HEIGHT WITH WHEELS	WEIGHT
SPR612	720 x 600 x 600 mm	540 mm	720 mm	50 kg

- Reversible door position
- Keylock on both doors and side panels
- In depth adjustable 19" profiles (front & rear)
- Cable entry on top & bottom
- Ventilation grid on top
- 50 mm wheels + leveling feet included
- Punched square holes for use with snap-in cage nuts
- Pre-assembled





## SPR8842

19" rack cabinet  
42 units - 800mm width  
Tempered glass front & steel rear door



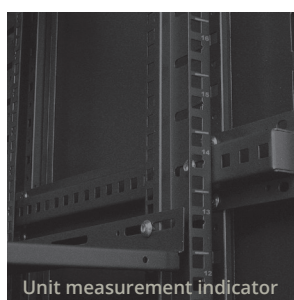
## SPR8842GG

19" rack cabinet  
42 units - 800mm width  
Steel perforated front & rear grill door

### Specifications:

ARTICLE	DIMENSIONS (W x H x D)	USABLE DEPTH	HEIGHT WITH WHEELS	WEIGHT
SPR8842	800 x 1985 x 800 mm	740 mm	2055 mm	116 kg
SPR8842GG	800 x 1985 x 800 mm	740 mm	2055 mm	118 kg

- Width of 800 mm for convenient installation and maintenance
- Stores up to 42 units of 19" equipment
- Integrated ventilation grid on top
- 50 mm wheels and levelling feet included
- Removable sides for easy installing & cabling
- Front and rear in depth adjustable 19" profiles (max 740 mm)
- Reversible door position
- Swing handle with cylinder lock
- Punched square holes for use with snap-in cage nuts



## TPR SERIES

The TPR30xA series are professional and solid constructed desktop racks with adjustable angle for 19" equipment compliant to ANSI/EIA RS-310D, DIN41491 and IEC60297 standards. It ensures maximum installation, connectivity and maintenance ease while simultaneously storing up to 9 units for studio, processing, test and other 19" equipment.

The 0° ~ 15° adjustable slanted front profiles offer optimal stability and a perfect viewing angle on the front panels of the installed equipment at any given time.



### TPR306A

Desktop open frame rack  
6 units  
Adjustable angle 0° ~ 15°



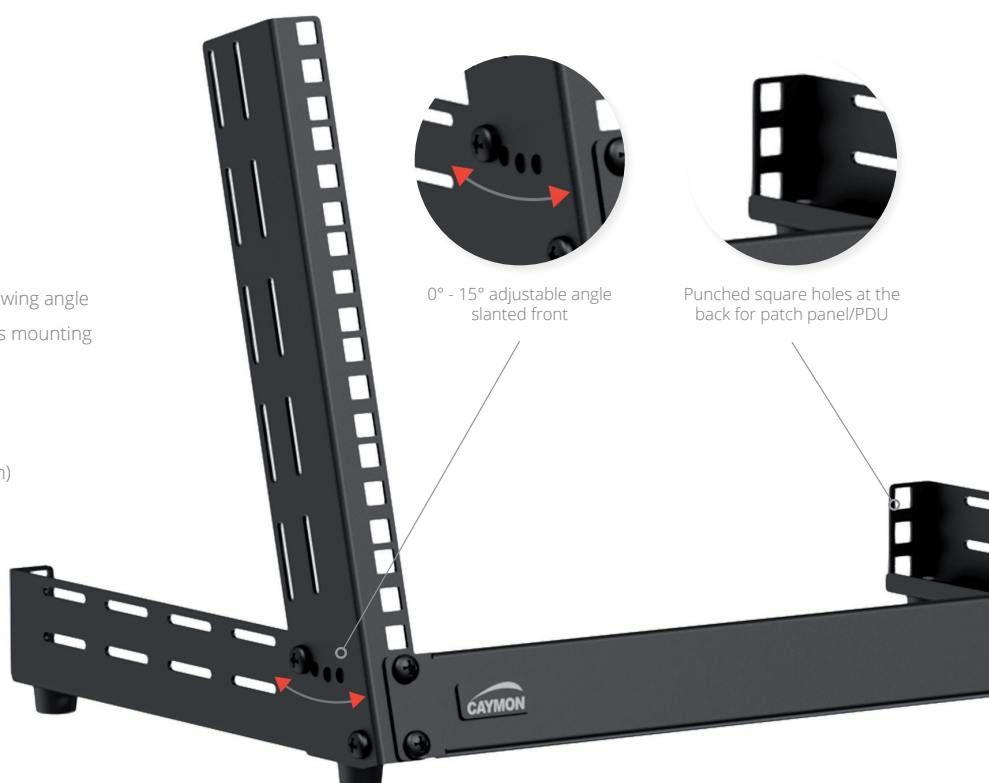
### TPR309A

Desktop open frame rack  
9 units  
Adjustable angle 0° ~ 15°

#### Specifications:

ARTICLE	DIMENSIONS (W x H x D)	MAX LOAD
TPR306	509 x 318 x 302 mm	30 kg
TPR309	509 x 447 x 302 mm	30 kg

- Slightly slanted front for stability and optimal viewing angle
- Perforated sides for cable guiding or accessories mounting
- Solid constructed (2.0 mm steel)
- Desktop standing use
- Simple structure
- Easy assembly in record breaking time (+/- 5 min)



## CASY SERIES

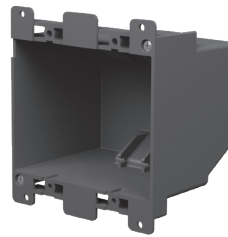
The CASY052 comes available in a 2 space chassis allowing flush mount implementation of a custom configuration by using the solderless audio, video, data and power modules of CASY. It can be mounted in any wall using one of the 2 available mounting boxes. A durable metal mounting box is available for installations in brick or concrete walls while a PVC variant is available for easy installation into dry walls.

### IN-WALL FRAME



#### CASY052

In-wall frame - 2 space  
Dimensions (H x W x D) :  
120 x 120 x 72 mm



#### WB20/FG

Flush mount box for CASY052  
- Hollow wall  
Dimensions (H x W x D) :  
109,4 x 101 x 72 mm



#### WB20/FS

Flush mount box for CASY052  
- Solid wall  
Dimensions (H x W x D) :  
101,3 x 102 x 54 mm



- Flush mount installation
- Up to 2 CASY modules
- Zinc plated metal subframe
- Mounting box available for solid or hollow wall





### CP45 SERIES

The CP45 series are 45 x 45 mm connection modules with various power sockets or switches available in black color. The 45 x 45 mm size is compatible with CASY303 and standard 45 x 45 mm mounting frames and cover plates. Electrical connection is made using screw terminals at the back of the module.



#### CP45PF

##### CONNECTION MODULE - FRENCH POWER SOCKET

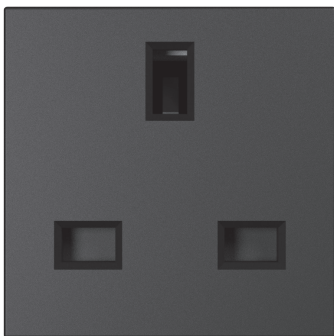
Connection made by using screw terminals  
Compatible with CASY303 and standard 45 x 45 mm frames  
Dimensions: 45 x 45 mm  
Built-in depth: 30 mm



#### CP45PG

##### CONNECTION MODULE - GERMAN POWER SOCKET

Connection made by using screw terminals  
Compatible with CASY303 and standard 45 x 45 mm frames  
Dimensions: 45 x 45 mm  
Built-in depth: 30 mm



#### CP45PUK

##### CONNECTION MODULE - UK POWER SOCKET

Connection made by using screw terminals  
Compatible with CASY303 and standard 45 x 45 mm frames  
Dimensions: 45 x 45 mm  
Built-in depth: 30 mm



#### CP45PG

##### CONNECTION MODULE - CHARGER MODULE WITH USB TYPE A AND TYPE C

Connection made by using screw terminals  
Compatible with CASY303 and standard 45 x 45 mm frames  
Dimensions: 45 x 45 mm  
Built-in depth: 27 mm  
DC output: 5V  $\leq$  4200mA



## CP45SM

### SWITCH MODULE - MOMENTARY CONTACT

Connection made by using screw terminals  
Compatible with CASY303 and standard 45 x 45 mm frames  
Dimensions: 45 x 45 mm  
Built-in depth: 25 mm



## CP45SM2

### SWITCH MODULE - 2 GANG MOMENTARY CONTACT

Connection made by using screw terminals  
Compatible with CASY303 and standard 45 x 45 mm frames  
Dimensions: 45 x 45 mm  
Built-in depth: 25 mm



## CP45SP

### SWITCH MODULE - PERMANENT DOUBLE POLE SWITCH CONTACT

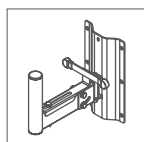
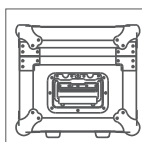
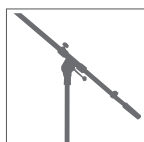
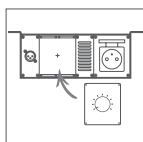
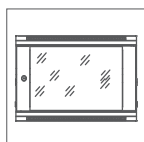
Connection made by using screw terminals  
Compatible with CASY303 and standard 45 x 45 mm frames  
Dimensions: 45 x 45 mm  
Built-in depth: 25 mm



## CP45SP2

### SWITCH MODULE - 2 GANG PERMANENT DOUBLE POLE SWITCH CONTACT

Connection made by using screw terminals  
Compatible with CASY303 and standard 45 x 45 mm frames  
Dimensions: 45 x 45 mm  
Built-in depth: 25 mm



[caymon.eu](http://caymon.eu)  
[info@caymon.eu](mailto:info@caymon.eu)